

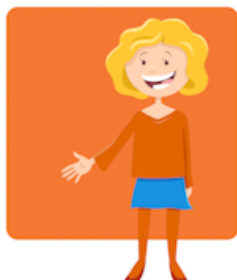
Colors

Most common





Yellow



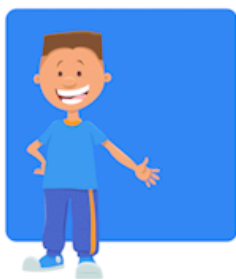
Orange



Red



Purple



Blue



Green



Turquoise



Pink



Gray



Brown



White



Black



Light brown



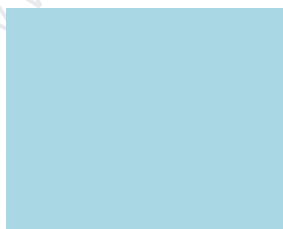
Dark brown



Light gray



Dark gray



Baby blue

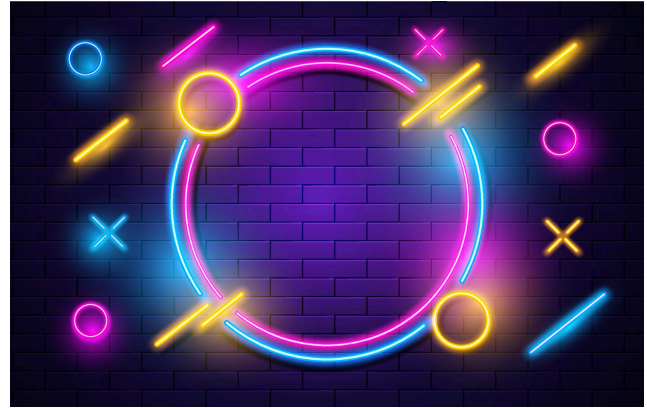
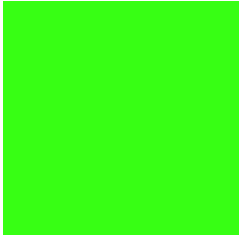
Sky blue

Light blue

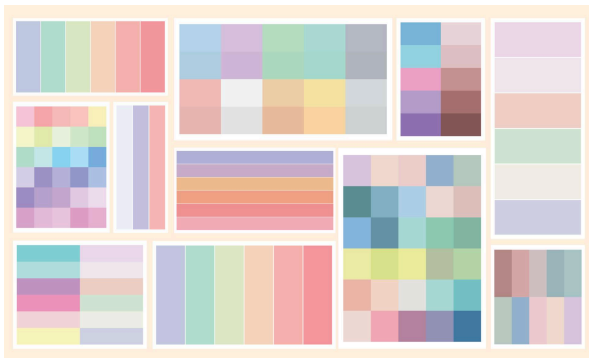


Navy blue

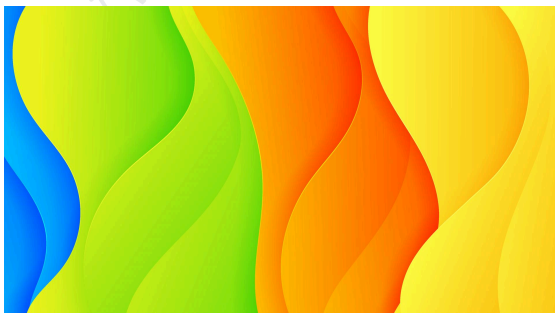
Dark blue



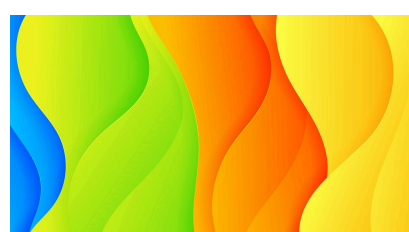
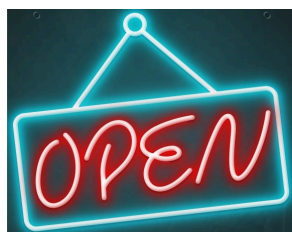
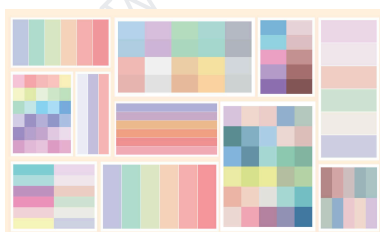
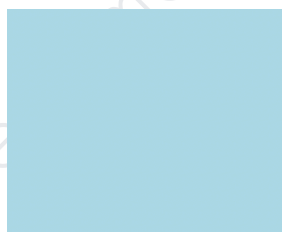
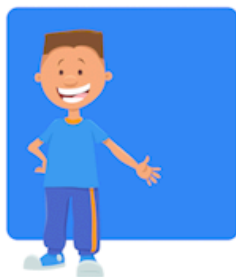
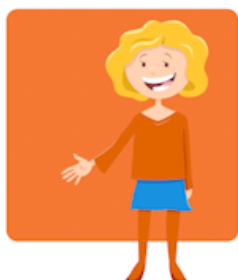
Neon



Pastel/Soft



Bright/bold



1. What color is the sky?

The sky is **blue**.

**2. What color is grass?**

Grass is **green**.

**3. What color is dirt?**

Dirt is **brown**.

**4. What color is a pumpkin?**

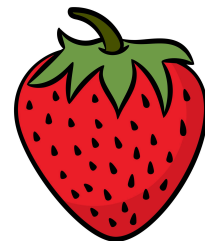
A pumpkin is **orange**.

**5. What color is the flower?**

The flower is **purple**.

**6. What color is a strawberry?**

A strawberry is **red**.

**7. What color is the sign?**

The sign is neon **red** and **blue**.








Hairstyles

Most common

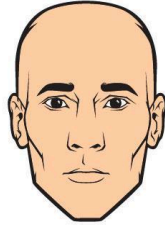




www.AwesomeEnglishSchools.com

Hairstyles

<p>1. What kind of hair does she have?</p> <p>She has curly black hair.</p>	
<p>2. What kind of hair does she have?</p> <p>She has straight brown hair.</p>	
<p>3. What kind of hair does she have?</p> <p>She has long blonde hair.</p>	
<p>4. What kind of hair does she have?</p> <p>She has short black hair.</p>	
<p>5. What kind of hair does she have?</p> <p>She has wavy brunette hair.</p>	

Medium-length hair: _____ Greasy: _____ Frizzy: _____

Hairstyles

<p>1. What kind of hair does he have?</p> <p>He is bald. He has no hair.</p>	
<p>2. What kind of facial hair does he have?</p> <p>He has a mustache.</p>	
<p>3. What kind of facial hair does he have?</p> <p>He has a goatee.</p>	
<p>4. What kind of facial hair does he have?</p> <p>He has a beard.</p>	
<p>5. What kind of hair do you have?</p> <p>I have _____.</p>	

Balding: _____ (When someone still has some hair, but it is on its way out.)